

# USER MANUAL

## apexcam K20

### ACTION CAMERA



Made in China



FR

Cet appareil,  
ses accessoires  
et câbles  
sont recyclés.



Forme de collecte sur [www.qualiteelectronique.fr](http://www.qualiteelectronique.fr)  
Profitez de la réparation ou le cas de votre appareil !!

# Contents

---

<b>FCC Rules.....</b>	<b>01</b>
<b>Safety Measures.....</b>	<b>03</b>
<b>Overview of camera.....</b>	<b>05</b>
<b>Getting started.....</b>	<b>05</b>
<b>Overview of modes.....</b>	<b>06</b>
Video Mode.....	07
Photo Mode.....	09
Shortcut Mode.....	10
Playback mode.....	11
Settings mode.....	11
<b>Three Setting Mode.....</b>	<b>12</b>
Video Setting Mode.....	12
Photo Setting Mode.....	15
Camera Setting Mode.....	17
<b>How to connect your camera to your phone?.....</b>	<b>19</b>
<b>Playback your content.....</b>	<b>21</b>
<b>Remote controller.....</b>	<b>22</b>
<b>Battery.....</b>	<b>22</b>

## FCC Rules

### **This device complies with part 15 of the FCC Rules. Operation is subject to the following two conditions:**

(1) This device may not cause harmful interference, and (2) this device must accept any interference received, including interference that may cause undesired operation. Any changes or modifications not expressly approved by the party responsible for compliance could void the user's authority to operate the equipment.

**NOTE:** This equipment has been tested and found to comply with the limits for a Class B digital device, pursuant to Part 15 of the FCC Rules. These limits are designed to provide reasonable protection against harmful interference in a residential installation. This equipment generates, uses and can radiate radio frequency energy and, if not installed and used in accordance with the instructions, may cause harmful interference to radio communications. However, there is no guarantee that interference will not occur in a particular installation.

If this equipment does cause harmful interference to radio or television reception, which can be determined by turning the equipment off and on, the user is encouraged to try to correct the interference by one or more of the following measures:

- Reorient or relocate the receiving antenna.
- Increase the separation between the equipment and receiver.
- Connect the equipment into an outlet on a circuit different from that to which the receiver is connected.
- Consult the dealer or an experienced radio/TV technician for help.

The device has been evaluated to meet general RF exposure requirement. The device can be used in portable exposure condition without restriction.

**- English: "**

This device complies with Industry Canada licence-exempt RSS standard(s).

Operation is subject to the following two conditions:



- (1) this device may not cause interference, and
- (2) this device must accept any interference, including interference that may cause undesired operation of the device."

**- French: "**

Le présent appareil est conforme aux CNR d'Industrie Canada applicables aux appareils radio exempts de licence. L'exploitation est autorisée aux deux conditions suivantes :

- (1) l'appareil ne doit pas produire de brouillage, et
- (2) l'utilisateur de l'appareil doit accepter tout brouillage radioélectrique subi, même si le brouillage est susceptible d'en compromettre le fonctionnement."

L'appareil a été évalué pour répondre aux exigences générales d'exposition aux RF. L'appareil peut être utilisé sans restriction dans des conditions d'exposition portables

 <b>WARNING</b>	
<ul style="list-style-type: none"><li>• <b>INGESTION HAZARD:</b> This product contains a button cell or coin battery.</li><li>• <b>DEATH</b> or serious injury can occur if ingested.</li><li>• A swallowed button cell or coin battery can cause <b>Internal Chemical Burns</b> in as little as <b>2 hours</b>.</li><li>• <b>KEEP</b> new and used batteries <b>OUT OF REACH OF CHILDREN</b></li><li>• <b>Seek immediate medical attention</b> if a battery is suspected to be swallowed or inserted inside any part of the body.</li></ul>	

## Safety Measures

Make sure you read and understand these safety Measures before using the device. If you notice any malfunctions, problems or damage to the device, please contact our customer service team: [supports@apexcam.com](mailto:supports@apexcam.com)

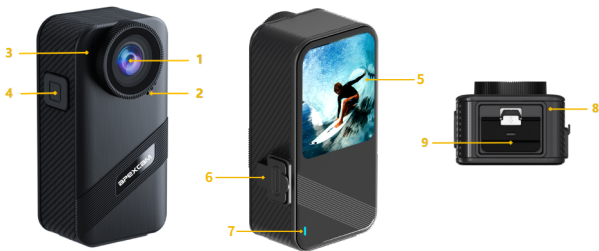


**Warning: Follow the instructions below to protect against fire, high heat, chemical leakage and electric shock.**

- Only use the batteries, charger and accessories that are supplied. The camera contains high-precision electronic circuits. Under no circumstances should you attempt to disassemble the camera yourself. Otherwise the guarantee will be void.
- Do not short-circuit the battery, do not disassemble it, and do not make any modifications. Do not associate the battery with heat. Batteries must not come into contact with fire or water. Do not expose the battery to strong physical shocks.
- If intense heat, smoke, or vapor is generated while charging the battery, please immediately disconnect the battery charger from the power supply to stop charging. Failure to do so may result in fire and electric shock.
- Immediately remove the battery if liquid leaks, changes color or shape, or emits smoke. Avoid touch the leaked battery fluid with eyes, skin and clothing, which could cause blindness or skin problems.
- The device must be stored in a cool, dry and dust-free place. Do not use this device in an environment over 45°C. Otherwise, the device may be deformed and its insulation may be broken, resulting in the risk of fire or electric shock.
- Please dispose of this device, its accessories and packaging in accordance with the circular economy law. Before handling the battery, isolate the electrical contacts with adhesive strips. Direct touch with other metal objects or batteries may cause a fire or explosion.

- Do not use external heat sources such as microwave ovens or hair dryers to dry the device or the batteries.
- Damage to the device or the battery due to water ingress is not covered by the warranty.

## OVERVIEW OF CAMERA



1. Lens
2. Speaker
3. Internal Microphone
4. Power/Shutter/Select Button
5. Touch Screen
6. TYPE-C Port waterproof silicone plug
7. Indicator
8. Waterproof Battery Door
9. Battery Door Lock

## GETTING STARTED

- Please format the memory card on the camera before using.

## OVERVIEW OF MODES

**There are 5 modes:** video mode, photo mode, shortcut mode, playback mode and settings mode.

### ■ Video Mode

5 video modes: Video Mode, Time Lapse Video Mode, Slow Motion Mode, Fast Motion Mode and Vertical Video.

#### ● Video Mode

Video mode is the regular video mode, video mode is the default mode when you turn on the camera. Video is recorded in a 16:9 image ratio. In Video Mode, press Shutter button to start recording video, press Shutter button again to stop recording video.



#### ● Time Lapse Video Mode

Time Lapse Video abbreviated as Video Lapse, Video Lapse creates video from frames captured at specific intervals. This option lets you capture a time lapse event and immediately view or share it as a video.

In Time Lapse Video Mode, press the Shutter button, the camera will take a series of videos at the set interval.





Tip:Audio cannot be recorded in Time Lapse Video Mode.

### ● **Slow Motion Mode**

Slow Motion Video, also known as high-frame-rate video, refers to a technique where the camera records video at a higher frame rate and then plays it back at a lower speed, typically 30 frames per second, resulting in a smoother and more dramatic effect.

In this mode, press the shutter button and the camera will record slow motion videos at 720P 4X.



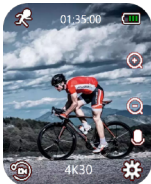
Tips:

- Audio cannot be recorded in Slow Motion Mode.
- If Slow Motion is on, EIS, Time-Lapse Video and Fast Motion will not be available.

## ● **Fast Motion Mode**

A technical effect that makes image movement faster than normal speed. In this mode, pressing the shutter button allows the camera to record fast action videos at different resolutions and speeds.

Tip: If Fast Motion is on, EIS, Time-Lapse Video and Slow Motion will not be available.



## ● **Vertical Video**

Vertical Video that means to record video in a 9:16 image ratio. In this mode, press Shutter button to start recording video, press Shutter button again to stop recording video.

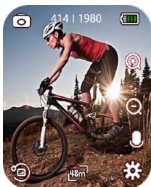


## ■ Photo Mode

3 photo modes: Photo Mode, Time Lapse Photo Mode and Burst Photo Mode.

### ● Photo Mode

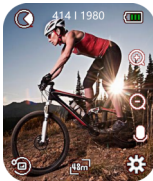
In Photo Mode, press Shutter button, the camera takes a photo per time.



### ● Time Lapse Photo Mode

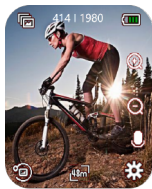
Time Lapse Photo captures a series of photos at specified intervals.

In this mode, press the Shutter button to take a series of photos at the set interval.



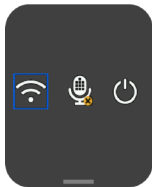
### ● **Burst Photo Mode**

Burst captures up to 10 photos per time, so it is perfect for capturing fast-moving activities. In this mode, press Shutter button, , the camera will continuously capture 3, 5, or 10 photos.



### ■ **Shortcut Mode**

The shortcut mode can quickly turn on/off the camera's WiFi and audio recording functions, as well as quickly turn off the camera. In this mode, tap on the desired icons on the screen to quickly perform related function.



## ■ Playback Mode

There are 2 Playback Mode: Video Playback Mode and Photo Playback Mode. In Playback Mode, You can playback or delete your content on the camera.



## ■ Settings Mode

There are three settings modes: video settings, photo settings, and camera settings.

In the setting mode, the camera parameters can be set according to the shooting needs.



## CUSTOMIZING YOUR CAMERA

There are 3 Setting Mode: Video Setting Mode, Photo Setting Mode and Camera Setting Mode.

### ■ Video Setting Mode

#### ● Video Settings:

- **Resolution: 4K30, 4K60, 2K30, 1080P30, 1080P60, 720P60, 720P120**

Default setting is **4K 30fps**.

- **Video Format: MOV / MP4**

Default setting is **MP4**.

- **Exposure(EV): -2.0, -1.0, +0.0, +1.0, +2.0**

Default setting is **+0.0**.

By default, your camera uses the entire image to determine the appropriate exposure level. However, EV lets you select an area that you want the camera to prioritize when determining exposure. This setting is particularly useful in shots where an important region might otherwise be over- or underexposed.

When you change this setting, the LCD display immediately shows you the effect on your image. If you change modes, the camera returns to using the entire scene to determine the correct level of exposure.

- **Stabilization (EIS): Off / On**

Default setting is **Off**.

This camera is equipped EIS function with 6-axis gyroscope to detect motion changes. When the camera tilts, moves, shakes, the sensor use image cross-border compensation algorithm to compensate the change and produce stable videos, especially in activities with relatively small angle (about 6 degrees)but fast motion including cycling, motorcycling, and hand-held uses.

- **Loop Recording : Off / 1Min / 3Min / 5Min**

Default setting is Off.

The files will be saved every 3 minutes if you choose 3 minutes. When the memory card is full, the new files will cover the existed one if the loop recording is on; If it is off, the camera won't record any more when the card is full, need to format the memory card or change a new one.

- **Video Pre-Rec : Off / On**

Default setting is **Off**.

After enabling prerecord, the camera can start recording videos from a few seconds before pressing the shutter button. The prerecord function is very suitable for recording exciting moments of unexpected activities, such as fishing, etc

- **Car Mode: On / Off**

Default setting is **Off**.

If you turn on car mode and connect camera with car charger, the camera will turn on automatically and start recording if you turn off your car's engine. and the camera will turn off and stop recording if you Turn off the car's engine.

- **Date Stamp: Off / Date / Date & Time**

Default setting is **Date & Time**.

If you turn on Stamp, this camera adds stamp to the video you take.

If you turn off Stamp, this camera will not add stamp to the video you take.

## ■ **Video Lapse Settings:**

- **Resolution: 4K30, 4K60, 2K30, 1080P30, 1080P60, 720P60, 720P120**

Default setting is **4K 30fps**.

- **Time Lapse Video: 1Sec / 3Sec / 5Sec / 10Sec / 30Sec / 1Min**

Default setting is **5Sec**.

Time Lapse Video creates video from frames captured at specific intervals. This option lets you capture a time lapse event and immediately view or share it as a video.

Select 3 seconds means recording 3 seconds to get one frame per second.

For example: If you select 4K/30FPS and 3 secs, you need to record 90secs, then you can get 1 sec video for 4K/30FPS.

- **Interval Record Time: Unlimited / 5min / 10min / 15min / 20min / 30min / 60min**

Default setting is **Unlimited**.

Continuously creates Time Lapse Video at specific duration.

## ■ **Slow Motion Settings**

- **Resolution: Off / 720P 4X**

Default setting is **720P 4X**.

Slow Motion Video, also known as high-frame-rate video, refers to a technique where the camera records video at a higher frame rate and then plays it back at a lower speed, typically 30 frames per second, resulting in a smoother and more dramatic effect.

## ■ **Vertical Video Settings**

- **Resolution: 2K30 / 1080P30**

Default setting is **1080P30**

- **Loop Recording : Off / 1Min / 3Min / 5Min**

Default setting is **Off**.

The files will be saved every 3 minutes if you choose 3 minutes. When the memory card is full, the new files will cover the existed one if the loop recording is on; If it is off, the camera won't record any more when the card is full, need to format the memory card or change a new one.

- **Video Format: MOV / MP4**

Default setting is **MP4**.

- **Exposure(EV): -2.0, -1.0, +0.0, +1.0, +2.0**

Default setting is **+0.0**.



- **Date Stamp: Off / Date / Date & Time**

Default setting is **Date & Time**.

## ■ **Fast Motion Settings**

- **Resolution: 4K30 / 2K30 / 1080P30 / 1080P60 / 720P60 / 720P 120**

Default setting is **4K30**.

- **Fast Motion Movie: Off / 2x / 4x / 6x / 10x / 15x**

Default setting is **Off**.

Note:

▲ If Fast Motion is on, Time-Lapse Video and Slow Motion will not be available.

- **Exposure(EV): Exposure(EV): -2.0, -1.0, +0.0, +1.0, +2.0**

Default setting is **+0.0**.

- **Date Stamp: Off / Date / Date & Time**

Default setting is **Date & Time**.

## ■ **Photo Setting Mode**

- **Photo Settings:**

- **Image Size: 48MP / 30MP / 20MP / 14MP / 10MP / 8MP / 5MP / 2MP**

Default setting is **20MP**.

- **Image Quality: High / Medium / Low**

Default setting is **High**.

- **Sharpness: High / Medium / Low**

Default setting is **Medium**.

Sharpness adjusts the sharpness of the objects in your scene, which is crucial for capturing the fine details and enhancing the overall quality of your photos or videos.

- **Self Timer : Off / Delay 2S / Delay 5S / Delay 10S**

Default setting is **Off**.

Notes:

▲ When Timed Photo is turned on, Timelapse Photo, Timelapse Photo Continuous Time and Long Exposure will not be available.

- **Long Exposure: Off / 1 second / 2 second / 5 second / 8 second / 30 second**

Default setting is **off**.

Note:

▲ If Long Exposure is on, Time Lapse Photo, Time Lapse Duration, Burst Photo and Delay Timer will not be available.

## ■ Burst Photo Settings

- **Image Size: 48MP / 30MP / 20MP / 14MP / 10MP / 8MP / 5MP / 2MP**

Default setting is **20MP**.

- **Burst Photo: Off , 3 shots / 1s , 5 shots / 2s , 10 shots / 4s**

Default setting is 3 shots / 1s.

Continuous shooting can take up to 10 photos in a certain amount of time, making it ideal for fast-moving events.

Note:

▲ If use Burst Photo is on, Time Lapse Photo, Time Lapse Duration and Long Exposure will not be available.

## ■ Photo Lapse Settings

- **Image Size: 48MP / 30MP / 20MP / 14MP / 10MP / 8MP / 5MP / 2MP**

Default setting is **20MP**.

- **Time-Lapse Photo: Off / 3 Sec / 5 Sec / 10 Sec / 30 Sec / 1 Min**

Default setting is **3 Sec**.

Time Lapse Photo captures a series of photos at specified intervals. Use this mode to capture photos of any activity, then choose the best ones later.

Note:

▲ If use Time Lapse Photo is on Burst Photo, Delay Timer and Long Exposure will not be available.

● **Interval Photo Time: Unlimited / 5 Min / 10 Min / 15 Min / 20 Min / 30 Min / 60 Min**

Default setting is **Unlimited**.

## ■ Camera Setting Mode

### ● Camera Settings:

● **Language: English/繁体中文/Italiano/Español/Deutsch/Français/日本語 /...**

Default setting is **English**.

You can set the camera's system language.

● **OSD: Off / On**

Default setting is **On**.

Set whether the function icon is displayed on the screen.

● **Image Rotate: Off / On**

Default setting is **Off**.

This setting determines the orientation of setting menu.

● **Screen Saver: Off / 30 second / 1min / 3min / 5min**

Default setting is **3min**.

Turns off the LCD display after a period of inactivity to save battery life. To turn on the LCD display again, press any button on the camera.

● **Auto Power Off: Off / 1Min / 3Min / 5Min**

Default setting is **3Min**.

Powers off your camera after a period of inactivity to save battery life.

● **Format Card: No / Yes**

To keep your micro SD card in good condition, reformat it on a regular basis. Reformatting erases all of your content, so be sure to offload your photos and videos first.

Note:

▲ If the battery is removed from the camera for an extended period of time, the date and time will be reset automatically.

● **Sounds: Shutter / Beep / Volume / Boot-up**

**Shutter: On / Off**

Set the shutter sound of the camera.

**Boot-up: On / Off**

Set the startup sound of the camera.

**Beep: On / Off**

Set the operating sound of the camera.

**Volume: 0/1/2/3**

Set the volume of sound recorded by the camera.

Record Audio: on/ off

Set up camera audio recording.

● **Remote: On / Off**

Default setting is Off.

After turning on the wireless remote control, it can only remotely operate the camera: start recording/stop recording/take photos.

● **Angle: Wide / Medium / Narrow**

Default setting is **Wide**.

This setting allows you to choose a desired field of view. Angle refers to how much of the scene (measured by degree) can be captured by the camera lens.

Note:

▲ Angle will be disabled when Image Stabilization is enabled.

● **Effect: Normal / BW / Natural / Negative / Warm / Contrast**

Default setting is **Normal**.

You can choose from these options to get a desired shooting result.

● **LDC (Distortion Calibration): On / Off**

Default setting is **Off**.

Turn on Distortion Correction, it can correct the image distortion.

- **White Balance: Auto/Daylight/Cloudy/Tungsten Light /Fluorescent/Dive mode**

Default setting is **Auto**.

AWB (Auto White Balance) lets you adjust the color temperature of videos and photos to optimize for cool or warm lighting conditions. When you change this setting, the LCD display immediately shows you the effect on your image.

- **System: Reset / System Info / Card Info**

**Reset: Yes / No**

This option resets all settings to their default values.

**System Info: Software data**

You can check the model, software version and updated time of your camera.

**Card Info: Capacity/Free Space**

## How to connect your camera to your phone?

### Step 1: Download iSmart DV2 APP

(1)Mode 1: Download "iSmart DV2" app from Google Play or Apple App Store.



(2)Mode 2: Scan the QR code below to download "iSmart DV2" app.

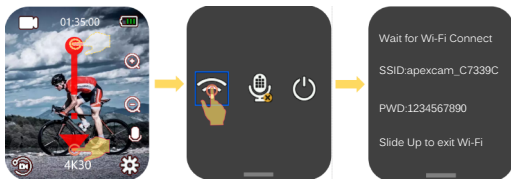


For Andriod Device

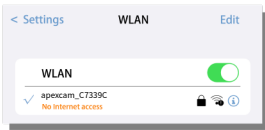
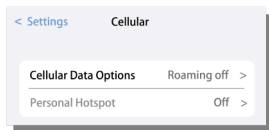


For IOS Device

**Step 2: Turn on the camera's Wifi function:** Turn on the camera, swipe down on the screen to Shortcut Mode and tap the "WIFI" icon to turn on the camera's WIFI.

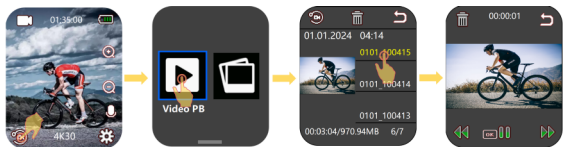


**Step 3: Turn off mobile data and connect the camera and smartphone via a Wi-Fi network. You will then be able to successfully connect to your phone.**



## PLAYBACK YOUR CONTENT

### Playback videos and photos on your camera



1. Verify in any Video / Photo mode.
2. Tap "Playback" icon in the bottom left corner of the screen to enter playback mode.
3. Tap "video Playback" icon /"photo playback" icon to enter into video playback / photo playback Menu.
4. In video playback / photo playback Menu, Slide up/down to locate the desired video or photo files.
5. Tap desired file to playback in full-screen view.
6. To exit the video or photo files, tap the "back" icon in the upper right corner of the screen.

**Note:** If your memory card contains a lot of content, it might take a minute for it to load.

### Delete videos and photos on your camera

1. Enter into Video playback mode / Photo playback mode.
2. Slide up / down on the screen to locate the video or photo file you want to delete.

3. Tap the "Delete" icon at the top of the screen to enter the file deletion menu.

4. Tap the "Single file" to delete the selected file.

## REMOTE CONTROLLER

Remote: 2.4G Transmission / **Non waterproof**

Range: 5M

### ■ How to turn on/turn off the remote function:

Select **ON/OFF** in the Camera Setting mode to turn on/off the remote controller.

### ■ VIDEO

- **To start recording:**

Press the Grey Video Button.

- **To stop recording:**

Press the Grey Video Button again.

### ■ PHOTO

- **To take a photo:**

Press the Red Photo Button. The camera will emit a camera shutter sound.

## BATTERY

The camera contains sensitive components, including the battery. Avoid exposing your camera to very cold or very hot temperatures. Low or high temperature conditions may temporarily shorten the battery life or cause the camera to temporarily stop working properly. Avoid dramatic changes in temperature or humidity when using the camera, as condensation may form on or within the camera.



## ■ Battery Storage and Handling

- Don't store in temperature above 140°F/60°C.
- Avoid exposing your camera to very cold or very hot temperatures. Low or high temperature conditions may temporarily shorten the battery life or cause the camera to temporarily stop working properly. Avoid dramatic changes in temperature or humidity when using the camera, as condensation may form on or within the camera.
- Do not dry the camera or battery with an external heat source such as a microwave oven or hair dryer.
- Damage to the camera or battery caused by contact with liquid inside the camera is not covered under the warranty.
- Do not store your battery with metal objects, such as coins, keys or necklaces. If the battery terminals come in contact with metal objects, this may cause a fire.
- Do not make any unauthorized alterations to the camera. Doing so may compromise safety, regulatory compliance, performance, and may void the warranty.
- Please do not throw the camera or its battery to the garbage, find a specific recycling point for it.

### **WARNING:**

- Do not drop, disassemble, open, crush, bend, deform, puncture, shred, microwave, incinerate or paint the camera or battery.
- Do not insert foreign objects into the battery opening on the camera.
- Do not use the camera or the battery if it has been damaged - for example, if cracked, punctured or harmed by water. Disassembling or puncturing the battery can cause an explosion or fire.

## ■ Charging the Battery

- 1.Connect the camera to USB power supply (5V/1-2A commended).
- 2.The charging status light remains ON while the battery is charging.
- 3.The charging status light will turn OFF when the battery is fully charged.

Notes:

- Charging time: 4-hours for 5V 1A power supply
- Please make sure the camera is shuttled down while charging.
- Remove the battery before using as a dash camera and use 5V/1A brand-name car charger.

## ■ Maximizing Battery Life

If the battery reaches 0% while recording, the camera saves the file and powers off.

To maximize battery life, follow these guidelines when possible:

- Turn off Wireless Connections
- Capture video at lower frame rates and resolutions
- Use Screen Saver setting.



For Andriod Device



For IOS Device

Download the APP/APK